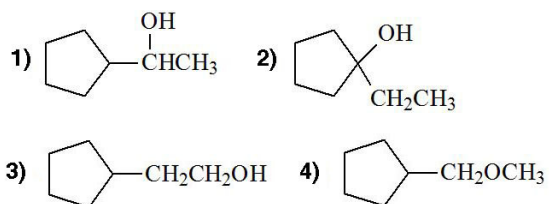
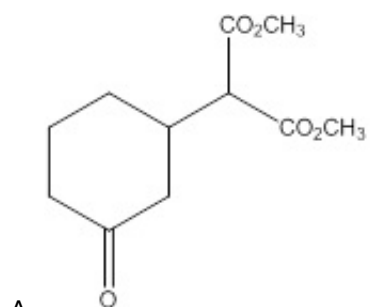
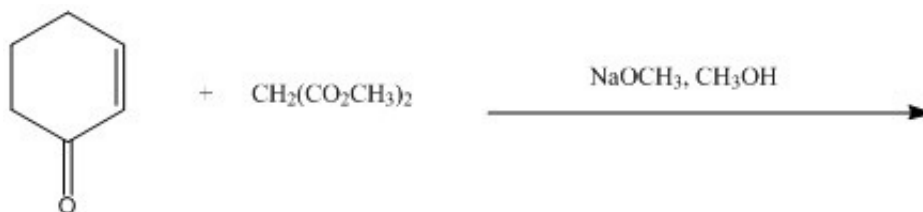


- 1) Un reattivo di Grignard viene preparato mediante reazione del ciclopentanololo con cloruro di tionile e successivamente magnesio in etere. Il reattivo di Grignard ottenuto viene, quindi, fatto reagire con un'aldeide (etanale) e la miscela di reazione viene dunque acidificata. Quale sarà il prodotto finale di questa serie di reazioni?

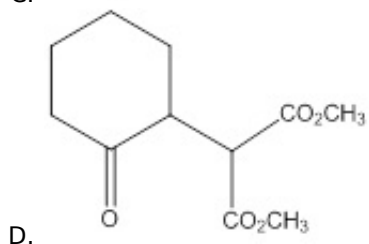
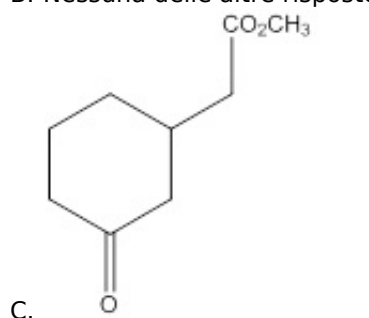


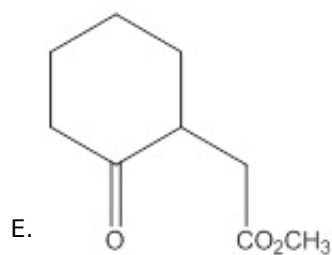
- A. 3 e 1
 B. 2
 C. 1
 D. 3
 E. 4

- 2) Indicare il prodotto organico principale della seguente reazione:

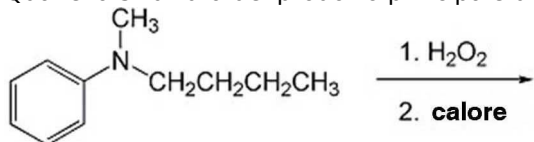


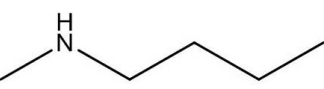
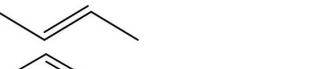

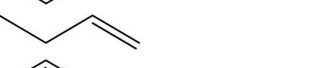

- B. Nessuna delle altre risposte



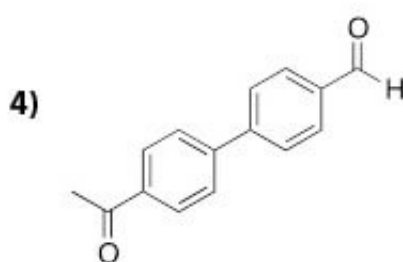
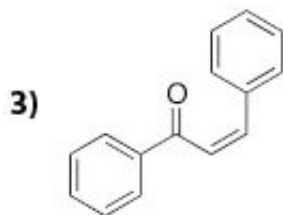
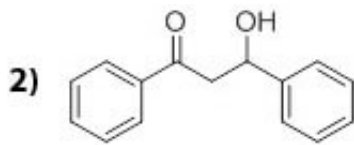
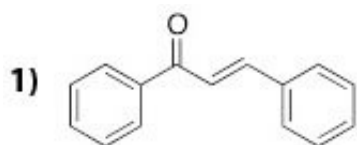
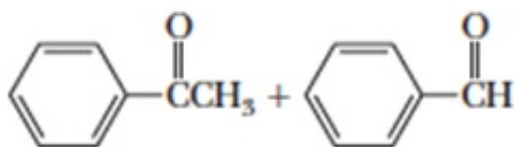


3) Qual è la struttura del prodotto principale della seguente sequenza di reazioni?



- A. 
 B. 
 C. 
 D. 
 E. 

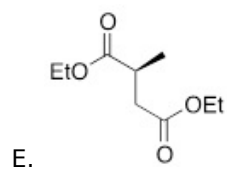
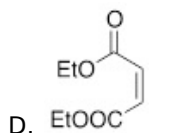
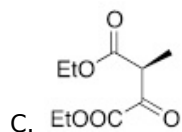
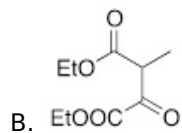
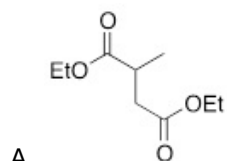
4) Senza tener conto di fattori cinetici e termodinamici, quale(i) prodotto(i) si può(possano) ottenere trattando la seguente molecola con NaOH a caldo?



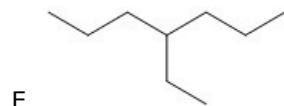
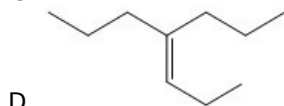
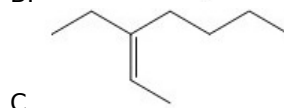
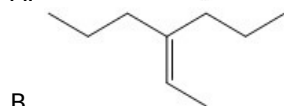
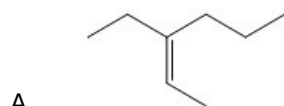
- A. 1, 3
 B. 3

- C. 4
- D. 2
- E. 1

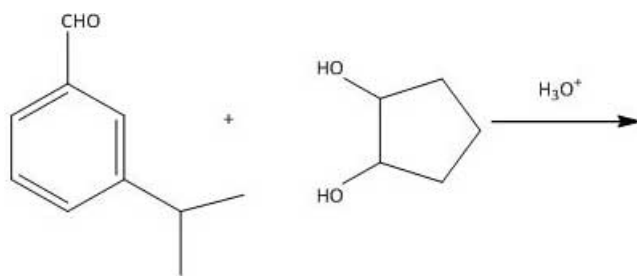
5) Cosa si ottiene facendo reagire il propanoato di etile con l'ossalato dietilico in ambiente basico per etossido di sodio?



6) Qual è la struttura del composto che si ottiene quando il 4-eptanone è trattato con $\text{CH}_3\text{CH}=\text{PPh}_3$?

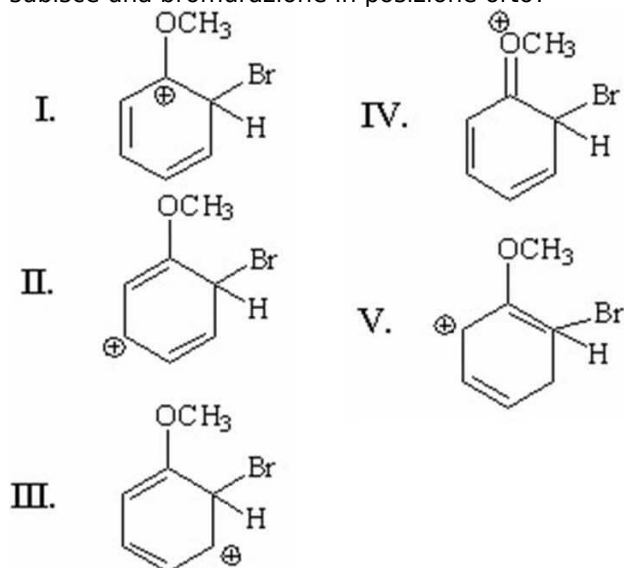


7) Cosa si ottiene dalla seguente reazione?



- A. Un chetale
- B. Non avviene alcuna reazione
- C. Un emiacetale
- D. Un acetale
- E. Un acetale ciclico

8) Quale fra le seguenti strutture dà un maggior contributo all'ibrido di risonanza che si ottiene quando l'anisolo subisce una bromurazione in posizione orto?

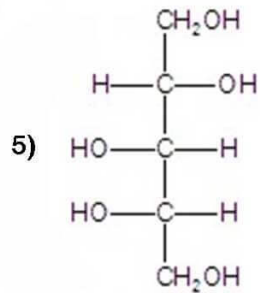
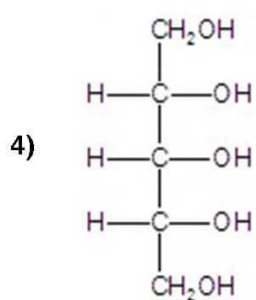
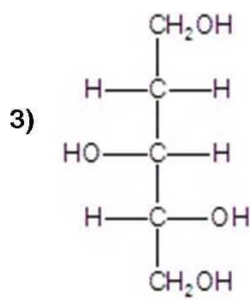
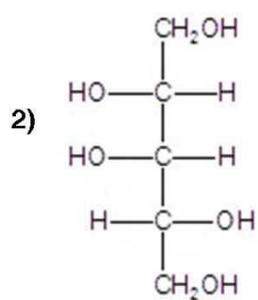
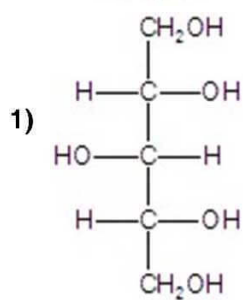
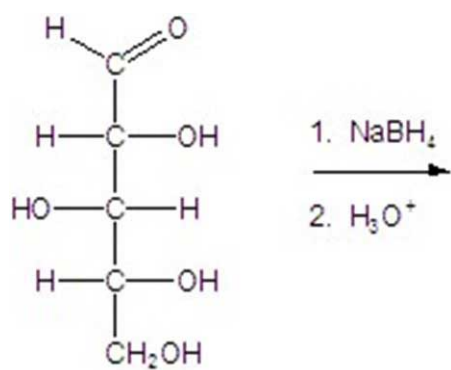


- A. IV
- B. I
- C. III
- D. V
- E. II

9) Cosa si ottiene quando il benzonitrile è trattato con LiAlH₄/H₂O?

- A. Un'ammina aromatica primaria
- B. Un acido carbossilico
- C. Un'ammide
- D. Un'ammina alifatica primaria
- E. Un sale

10) Qual(i) è(sono) il(i) prodotto(i) della seguente sequenza di reazioni?



- A. 3
- B. 2 e 4
- C. 1 e 5
- D. 4 e 5
- E. 1